



WORLDWIDE ELECTRIC MOTOR DATA SHEET

PEWWE30-18-286T



HORSEPOWER	30		
RPM / POLES	1800 / 4		
VOLTAGE / PHASE	230 / 460 V / 3		
FRAME	286T		
ENCLOSURE / DEGREE OF PROTECTION	TEFC / IP55		
FREQUENCY	60 HZ Suitable For 50 HZ Operation With 1.0 SF		
FULL LOAD SPEED	1770 RPM		
SERVICE FACTOR	1.25		
INSULATION CLASS	F		
FULL LOAD AMPS; 230 / 460	69 / 34.5 A (Usable On 208V At 76.3 A)		
LOCKED ROTOR AMPS (STARTING); 230 / 460	435 / 217.5 A		
NO LOAD CURRENT	26 / 13 A		
NEMA CODE LETTER	G		
EFFICIENCY / POWER FACTOR	<u>LOAD</u>	<u>EFF.</u>	<u>P.F.</u>
	100 %	93.6%	0.85
	75 %	93.9%	0.82
	50 %	93.4%	0.72
DUTY CYCLE	S1 / Continuous		
TORQUE	<u>FULL LOAD</u>	<u>LRT</u>	<u>BDT</u>
	89 lb.ft.	160%	240%
SLIP	1.67 %		
NEMA DESIGN	B		
MOMENT OF INERTIA	3.38 lb.ft.²		
MAX. TIME LOCKED ROTOR (Hot)	12 Seconds		
SOUND PRESSURE LEVEL	70 dB (A)		
MAX. AMBIENT TEMPERATURE	40° C		
MAX. ELEVATION	3300 Ft.		
TEMPERATURE RISE (At Full Load)	80° C		
DE BEARING	6311 C3		
ODE BEARING	6309 C3		
REGREASING INT. - DE BEARING	4000 Hours		
REGREASING INT. - ODE BEARING	5000 Hours		
GREASE TYPE	SKF LGHP 2		
MOUNTING	F1		
ROTATION	Bi-Directional		
SHAFT MATERIAL	1045 Carbon Steel		
INVERTER RATING	10:1 CT / 20:1 VT PWM Type		
CONNECTION DIAGRAM	230 / 460 V - 12 Lead Δ		
AREA CLASSIFICATION	Class I, Division 2, Groups A, B, C, D		
APPROXIMATE WEIGHT	405 lbs.		



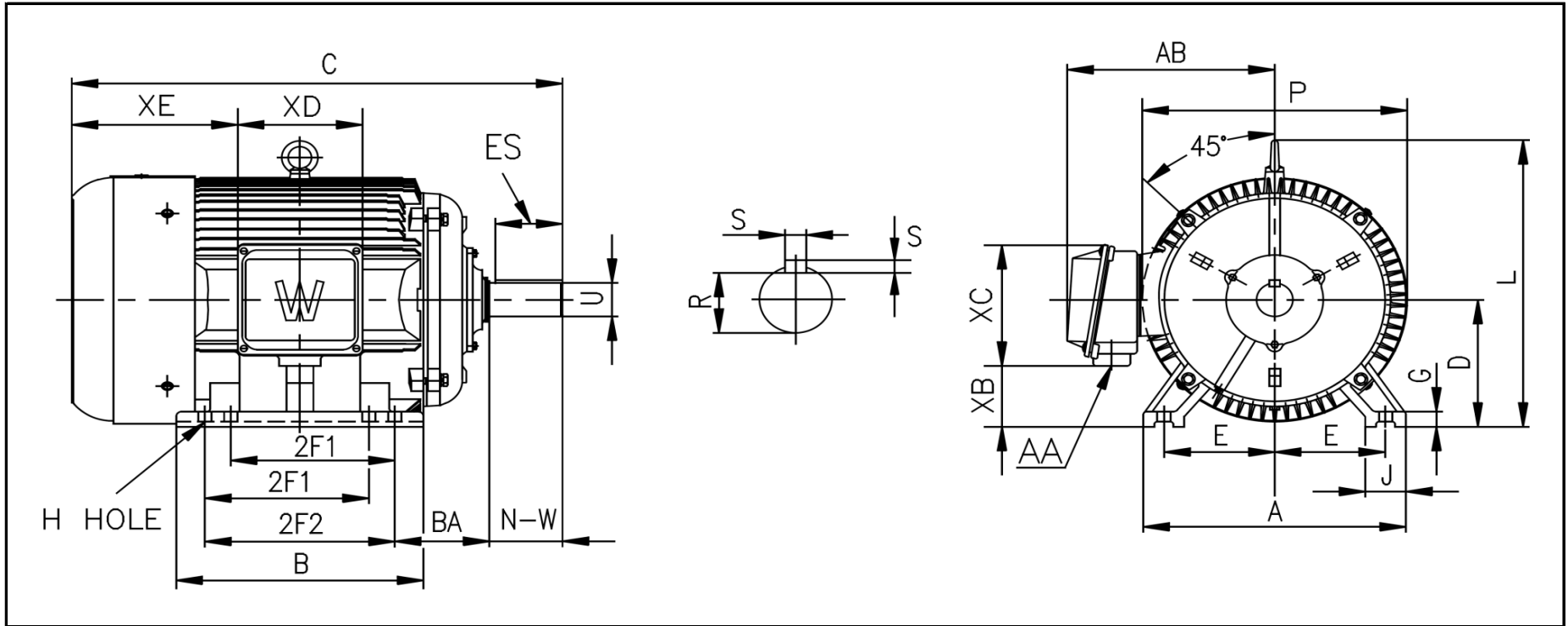
CC006A





WORLDWIDE ELECTRIC MOTOR DRAWING

PEWWE-286T



DIMENSIONS - INCHES

MOUNTING					A	B	C	D	G	J	P	L	AB
E	2F1	2F2	H	BA									
5.5	9.5	11	0.53	4.75	14	13.9	28.1	7	0.87	2.8	14	14.3	11.5

KEY		KEYSET	SHAFT		TERMINAL BOX				
S	ES	R	N-W	U	AA	XB	XC	XD	XE
0.5	3.28	1.591	4.62	1.875	1.5	3.6	7.4	6.3	10.25

PERFORMANCE CURVES

WorldWide Electric Corporation

1 (800) 808-2131

Worldwideelectric.net

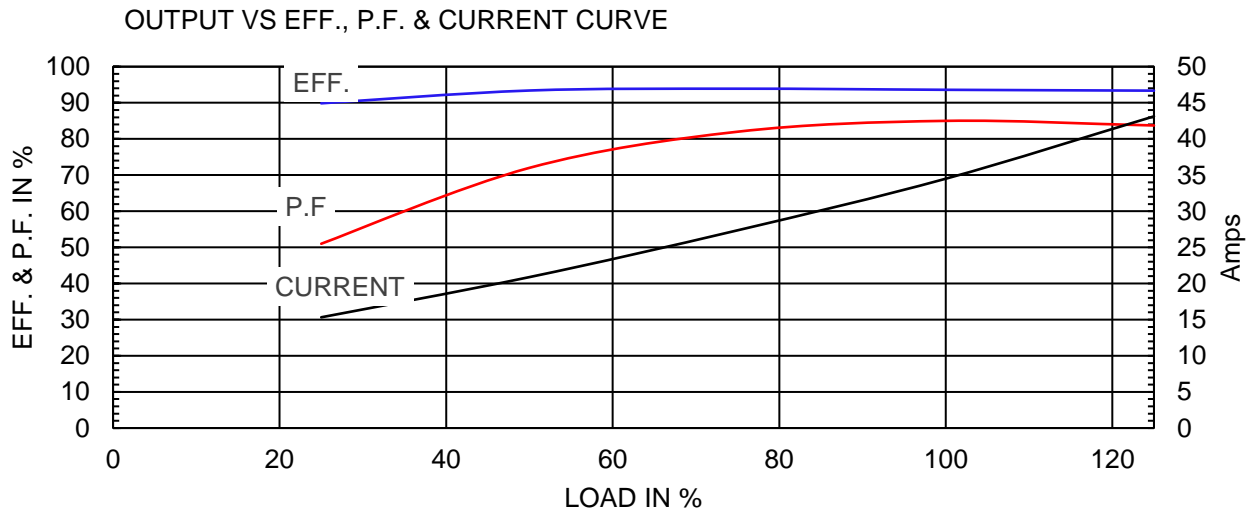
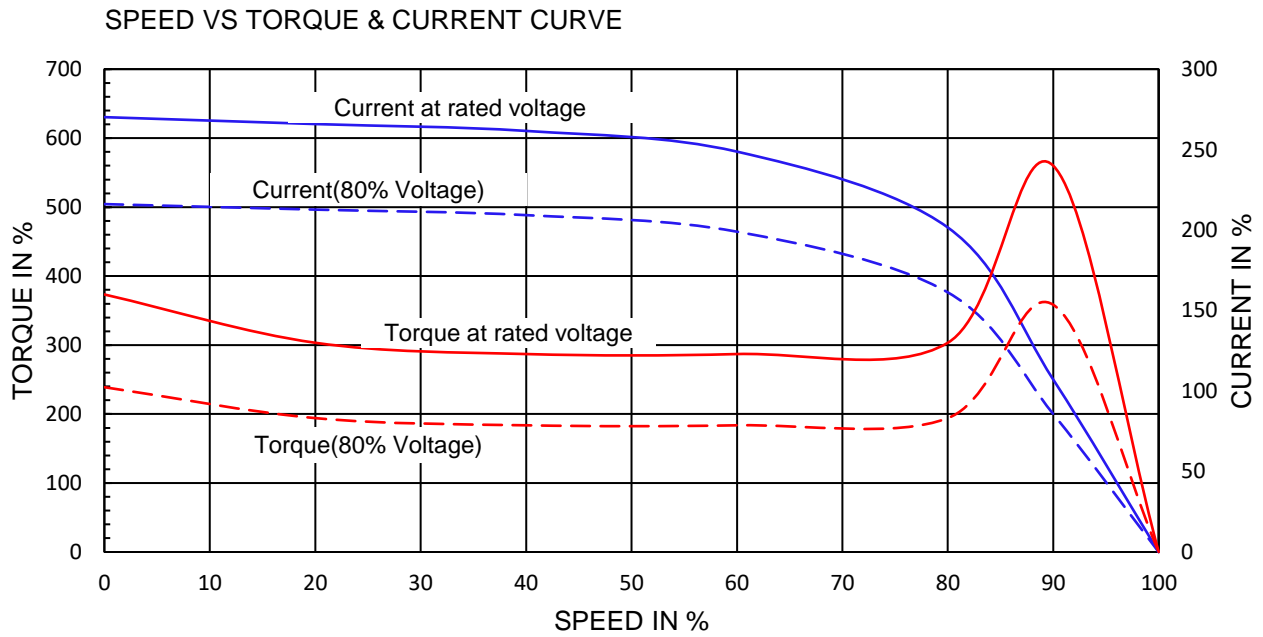


Premium Efficiency Motor:

PEWWE30-18-286T

Document Generated: 25-Jun-2020	Customer:
Document ID:	

Motor Type	PEWWE		FL Speed	1770	
Output Rating (HP)	30		LRT (%FLT)	160	
Full Load Torque	89	lb.ft	460 volt FLA	34.5	
Rotor Wk ²	3.38	lb-ft ²	230 volt FLA	69A	
			BDT (%FLT)	240	



NAMEPLATE / WIRING

WorldWide Electric Corporation

1 (800) 808-2131

Worldwideelectric.net



Premium Efficiency Motor: **PEWWE30-18-286T**

Document Generated: 21-Aug-2019
Document ID:

Customer:

SAMPLE NAMEPLATE DATA

		PREMIUM EFFICIENCY 3-PHASE INDUCTION MOTOR				CC006A ISO9001	259277
Model	PEWWE30-18-286T		Ser No.		ZP		
HP	30	S.F.	1.25	Type	TEFC IP55		
Frame	286T	P.F.	0.87	Ins Cl	F		
Voltage	230/460	Hz	60Hz	Design	B		
Amps	70.6A / 35.3A	RPM	1770	Code	G		
Nom. Eff.	FL 93.6%	3/4 93.9%	230/460V		Date		
Usable on 208V network at 76 Amps 1.0SF		Class I DIV. 2 Groups A B C D		Amb. 40°C		T3C(160°C)	
10:1 CT 20:1 VT PWM VFD 1.0SF		Class I Zone 2 IIC		Amb. 55°C		T3A(180°C)	
50Hz 30 HP 200/400 V V 83 / 41.5 A 1465 rpm S.F1.0							
WorldWide Electric Corporation							

